

2025
COMPANY
PROFILE

Always on Top®
Our Team
Representative Projects
Safety
Awards

CENTRALTM

ROOFING COMPANY

- Since 1929 -

Celebrating over 95 years of mission-driven industry leadership.

There is not much about roofing that is the same as when we were founded in 1929. How we plan, how we prepare, safety, application, quality, maintenance, and even the function of the roof itself has changed through the years. Now roofs serve to protect and conserve resources. Roofs serve as gathering and recreation spaces. Roofs serve to provide architectural interest. **Central Roofing Company has done more than evolve with the times, we have set the trends.** There is no match to our mission to continue inspiring our industry to greater heights.

Our mantra: “Always on Top”

What it means to us: Unpacked, “Always on Top” is a concept representative of our culture and collective mission. We will remain in front of our industry; above the competition. We will always find a way to do what others don’t try. As leaders, we go up first, set the pace, and secure the front line, then look to new horizons and move forward again. As mentors, we inspire and teach so more will learn and lead. As people, we are inclusive; we care for our own and others. *We are Central.*

Our cornerstone beliefs

- **Every day on the job is an opportunity to soar.** We earned our position as the premier roofing company in Minnesota. We worked hard for it and we are proud of it. But it’s not a given. We are grateful for every opportunity to prove we are still on top and we take the challenge to heart and hand with every project from bid to maintenance. Before a crew steps on-site, our team, composed of countless years of professional training and expertise, roofing and building exterior experts in quality control, safety management, architectural drafting, estimating, and project management, plans and prepares. We use the latest technology and hard-earned skills to ensure a positive outcome in product and client service, then communicate, check, and recheck from pre-production to warranty.
- **Our employees are the reason we are in business.** Without the men and women in the field and behind our projects, there wouldn’t be a Central Roofing Company. Period. Our expectation is 100% commitment to excellence in everything, all the time. Not an easy job to fill literally or figuratively; we know that and we honor our employees for it with an equal commitment to safety, fair pay and benefits, family, and a positive work culture.
- **Safety is paramount.** We make aggressive investments in an active committee of on-staff safety planners and quality control inspectors. As our projects increasingly become more visionary and technically difficult, our commitment to employee, client, and property safety and security grows in stride.
- **When blessed, be a blessing.** Through a variety of measures, most notably our employee-driven *Scrapping for Kids* sheet metal recycling and charitable giving project, we donate over \$250,000 a year to benefit causes near and dear to our extended Central family. As we grow, so does our drive to give back and improve our community as well as the prospects and life experiences of children, military veterans, and their families, the homeless, and deserving others.

↔ *As you climb the ladder, reach down and bring someone else with you.* →

CENTRAL ROOFING COMPANY, a nationally certified woman-owned and operated private corporation with over 200 union employees, has established an impressive and prolific portfolio, completing an industry-leading average of \$45 to 50 million dollars in commercial projects across Minnesota and the Midwest each year. In nearly a century in business, we have walked thousands and thousands of miles of rooftops. Our work is seen across the skylines of the Twin Cities and within nearly every major city in the state and region. According to the National Roofing Contractors Association (2021), one in four commercial roofing projects in the Twin Cities is completed or maintained by Central Roofing Company.

GERRY STOCK

Gerry Stock is the majority-holder, President and CEO of Central Roofing Company. She has been at the helm of a major Twin Cities roofing company for nearly 25 years; in her seat at Central since 2011. Gerry's roots in Central and the roofing industry have grown since childhood. Her father was a career journeyman roofer and a former employee of the company she now owns and operates. In her tenure at Central Roofing Company, the company's annual sales have grown 30% to date. Our services diversified with the expansion of our in-house sheet metal fabrication center and the addition of drafting, design, and installation of metal architectural wall panels. Our service department is now the largest around-the-clock fleet in the state of Minnesota.*

*(*Based on the percentage of dedicated Service Department employees at Central Roofing Company compared to competitors.)*

PRODUCTION

Commercial roofing comprises 70% of our work. The Production Department is responsible for all new construction projects, total re-roofs, historical restoration, and most vegetated roofs. In peak season, up to twelve crews of highly skilled professionals are led by an equally organized team of operations managers, project managers, superintendents, and foremen to keep the pace and integrity of our production schedule flowing daily. Crews specialize in roof type, difficulty of application, and often, location to produce the best results.

Key Staff: Jason Stock, Lloyd Carr, Matt Tueffel

SERVICE

Our 24/7 Service Department operates year-round responding to repair calls, emergencies, maintenance needs, roof inspections, multi-family housing exterior service, weather-triggered issues, the waterproofing aspects of Production projects, vegetated roofing maintenance, and most retrofit projects. Service Technicians operate in two-person teams and call on anywhere from two to five worksites per day. Each technician receives additional training in client service, communication, and project planning. It is a highly collaborative and extensively talented department which accounts for roughly a quarter of our annual sales and one-third of our total employees.

Key Staff: Corey Sias, Josh Mattson

SHEET METAL

Inside Central Roofing Company we house one of the more extensive in-house sheet metal shops held within a private company. In addition to our equipment, supply, purchasing, and space capabilities, we also employ the very best craftsman in the trade. As trends in roofing and new construction rely more and more on metal to create architecturally interesting and energy-wise masterpieces, Sheet Metal adapts. The changes within this department in the past decade are the best testament to the evolution and prospects of construction and roofing. Only application is still accomplished by hand; everything else from conception and drafting to fabrication is assisted by state-of-the-art technology. We offer all types of metal roofing, as well as guttering systems and custom metal finishing of all kinds.

Key Staff: Al Wagner, Corey Degris, Jeremy Broking

ARCHITECTURAL & STRUCTURAL WALL PANELS

We install a range of product types from composite to glass, pre-formed to custom wall panels to commercial building exteriors. All manner of building exteriors such as store-fronts and cantilevers, balconies, skylights, and windows incorporate metal wall paneling and its demand by architects and designers continues to grow. Interior spaces are also trending towards metal wall paneling. With the design, function, and aesthetic versatility made possible by the material, metal is this century's wallpaper.

Key Staff: Mike Mehring, Al Wagner, Jeremy Broking

PROJECT MANAGEMENT

Our team self-selects their projects beginning with the bidding process. This group has responsibility for sales, estimation, and leading project fulfillment. As a result, the level of preparation and planning required to build today's roofing project is done before the first crew steps on site. Moreover, there are never handoffs; project managers are in control until the final walkover and close-out. Project after project, they remain committed to their clients at all phases of the roof; eager to maintain a long professional relationship with every client.

Key Staff: Mike Mehring, Corey Sias, Henri Germain, Al Wagner, Jeremy Stuhr, Jon Meyer, Jesse Wilcox, Matt Barlau, Jared Mehring, Jordan Carr, Adam Fritche, Carter Uphus

FIELD LEADERSHIP

Each of our departments is led by superintendents who are masters in the orchestration of commercial construction. In the field, they are supported by foremen and crews of professionals who also specialize in a project type and consistently work together. The result is a long resume of successful projects for each Central Roofing Company field employee and a workplace culture recognized for effective communication, operation systems, safety, and employee retention. Our employees make their careers with us from apprentices to Journeymen--men and women who all together, have vast years of experience and commitment to their work.

Foremen: Alberto Aguilar, Bill Detsch, Ivan Vivaldo, Jeff Gillespie, Jeff Nicpon, Jeremiah Chapman, Keith Graff, Marc Nicpon, Mark Michels, Nick Gangi, Sean Fuller

SAFETY

Nothing tops safety as a workplace concern. A solid safety record attracts the best roofers to our company, keeps projects moving smoothly, and helps our insurance rates to remain reasonable – all of which come back to our customers in the form of projects that stay on schedule and budget. To that end, Central Roofing Company complies with all federal, state, and local safety standards, and provides frequent safety and health training to our employees, including rigorous annual training in fall protection, personal safety, and industry-related risks. We have an aggressive AWAIR (A Workplace Accident and Injury Reduction) plan that includes a safety and health program conforming to the best practices of our industry to eliminate all work-related injuries and illnesses. We also participate in the State of Minnesota's Apprenticeship Program for Roofers, which includes a comprehensive asphalt and roof safety component. Central Roofing Company's low Experience Modification Rate (EMR) reflects how our loss prevention and control practices stack up to others in the roofing industry. We are consistently in the top 5% of Minnesota roofing companies.

Key Staff: Jason Stock, Lloyd Carr, Matt Tueffel, Josh Mattson, Corey Degris, Jeremy Broking

QUALITY CONTROL

We are proud to be the only commercial roofing company in our industry to have on-staff quality control experts. We have always been committed to quality workmanship and secure projects but with the addition of dedicated personnel to walk every roof during and after production, quality is as embedded in our operations and culture as nails or ladders. It is a fundamental part of the value we bring to clients. More so, dedication to quality elevates our problem-solving capabilities, the effectiveness of our team's response, and pride in our completed projects.

Key Staff: Lloyd Carr, Josh Mattson, Brock White (independent consultant)

CRANING, TRUCKING, FACILITIES

We own, operate, and maintain our fleet of cranes, including six Potain stationary cranes, semi-trucks, asphalt tankers, and service vehicles. Drivers, operators, and mechanics work daily, including weekends in peak season, to ensure our crews have access to the equipment and material needed to stay on schedule. They are supported by operations managers, yard operators, and inventory managers who organize and account for everything that goes on each vehicle before it leaves our doors. Attention to these aspects of our business produces efficiencies and cost-saving measures which are directly passed to clients via our estimators during the bidding process. It is an example of the systems in place that frees time and resources to focus on improving our business model.

Key Staff: Lloyd Carr, Josh Mattson, Jeff Walstrom, Irma Wynkoop

ACCOUNTING, CLOSEOUTS, WARRANTIES

With the complexity and sheer volume of financial necessities managed for our projects and employees, the accounting department at Central Roofing Company is fundamental to the daily operations of the company. The department acts as the core link between the internal and external transactions for the company by managing bonds, insurance, financial reporting, relationships with financial institutions, purchasing, and payroll influenced by four different unions. Led by Chief Financial Officer, Jason Stock, the team's expertise extends to project closeouts, warranties, purchasing, and collections.

Key Staff: Gerry Stock, Jason Stock, Kambria Morris, Carrie Boras

SYSTEMS, CERTIFICATIONS, BIDS, COMMUNICATIONS

We add value to our clients through our national and state certifications and good standing with general contractors and all major suppliers. We are nationally certified Woman-Owned by WBENC and recognized WBE by the State of Minnesota. We are GSA project-capable to provide work and supply projects for government contracts across the United States. We are at the top level of purchasing, training, and certification for every major roofing material company. Central Roofing Company is a preferred roofing contractor by most of the major general contractors in the Midwest and appreciates the opportunity to bid on the majority of public projects and private opportunities presented across Minnesota and much of the region.

Key Staff: Gerry Stock, John Wynkoop, Jessica Tesdall

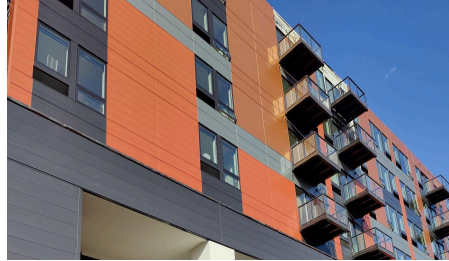
← *Team Central. Think big, work hard, & surround yourself with good people.* →

CENTRAL ROOFING COMPANY'S body of work spans the Midwest and represents many of the most recognized buildings in the Minnesota skyline. We maintain the Standard-Setting Safety Record and lead the industry in innovation and project scale. Minnesota's small businesses, schools, colleges and universities, highrises, hospitals and clinics, entertainment venues, corporations, airports, stadiums, museums, attractions, banks, municipalities, libraries, retail spaces, and more, trust Central Roofing Company to keep their business at the top of our priorities year after year. Our ability to consistently meet those expectations and maintain the bar for our industry is why **We are Central®**.

Representative Projects



Haecker Hall, 2021



The Alvera, 2021



MN Vikings Indoor Practice Facility, 2021

Newport City Hall, Newport, Minnesota

Industry: Government

Systems: Rooftop Ballasted Pavers, Fully Adhered TPO, Metal Panels

Roof Area: 193 Squares

Replacement & Renovation

Polaris Industries, Medina, Minnesota

Industry: Corporate

Systems: Built-up Roof, Metal Canopies

Roof Area: 20 Squares + canopies

New Construction, Expansion

The Alvera, St. Paul, Minnesota

Industry: Multifamily, Condominiums & Apartments

Systems: Single Ply TPO, Metal

Roof Areas: Amenity, 70 Squares + Main, 175 Squares

New Construction

International Institute of Minnesota, St. Paul, Minnesota

Industry: Education

Systems: Green Roof/Waterproofing, Single Ply EPDM

Roof Areas: Garden, 6 Squares, A-D 100 Squares

Roof Replacement, Garden Roof Assembly

Hannay's Showroom, St. Anthony, Minnesota

Industry: Retail

System: Single Ply Fully Adhered EPDM

Roof Area: 293 Squares

Replacement

Sheehan Hall - Winona State, Winona, Minnesota

Industry: Education

Systems: Single Ply Reinforced EPDM

New Construction, Expansion

Haecker Hall - University of Minnesota, St. Paul, Minnesota

Industry: Education, Residence

Systems: Ludowici French Tile, Standing Seam Metal, Copper Metal, Built-up Roof

Roof Areas: 160 Squares Total

Historical Restoration, Replacement

Red Wing Public Works, Red Wing, Minnesota

Industry: Government

Systems: Built-up Roof, Single Ply Fully Adhered White EPDM

Roof Areas: Police Storage Building, 76 Squares, Transit Building West, 24 Squares, Transit Building East, 80 Squares
Replacement

Amazon - Brooklyn Park, Brooklyn Park, Minnesota

Industry: Distribution

System: Single Ply Ballasted EPDM

Patching

Park Nicollet Methodist Hospital Radiology Expansion, St. Louis Park, Minnesota

Industry: Medical

Systems: Built-up Roof, Flood Coat and Gravel

New Construction, Renovation

Minnesota Vikings Indoor Practice Facility, Eagan, Minnesota

Industry: Sports & Entertainment

System: Single Ply Fully Adhered EPDM

Roof Area: 110 Squares

Replacement

Landmark Center, St. Paul, Minnesota

Industry: Public, Retail

Systems: Single Ply Reinforced EPDM, Custom Metal Gutters

Historical Restoration

← To view other projects, visit centralroofing.com/portfolio or email jtesdall@centralroofing.com. →

AT CENTRAL ROOFING COMPANY, safety is our top-of-mind priority. Project planning, job site set-up, and daily operations start and end with the safety of our employees, clients, and the public below our worksites. We work towards ZERO INCIDENTS. Our commitment to reaching that goal is an investment in extensive safety training for project managers, production staff, in-the-field professionals, and advisors who are above and beyond the industry standard OSHA mandates. This train-the-trainer model assures that everyone who walks a Central Roofing Company project every day does so with the intent and purpose of a roof inspector. The result is cleaner sites, increased quality in the application of our roofing and sheet metal systems, and most importantly, generally improved work conditions.

Central Roofing Company's low Experience Modification Rate (EMR) reflects how our loss prevention and control practices stack up to others in the roofing industry. We are consistently in the top 1% of national commercial roofing companies.



We comply with all federal, state, and local safety standards, and provide frequent safety and health training to our employees in addition to training mandated by our employee's respective labor unions. This includes rigorous annual and monthly training in:

- *Fall Protection*
- *"Right to Know" Exposure Risks*
- *HAZMAT Handling*
- *Safe Equipment Use*
- *Electrical Safety*
- *Fire Safety*
- *Overhead Powerline Safety*
- *Flagger Training*
- *Rough Terrain Operator Training*
- *Rigger Training*

We are **CENTRAL** to quality outcomes.

Erecting, finishing, and securing a commercial building takes the cooperation and expertise of many. Collaboration with our industry partners creates better outcomes for our clients and the future of construction in Minnesota. National, state, and media recognition is high amongst our many differentiators.



UNION STRONG



INDUSTRY & COMMUNITY MEMBERSHIPS



MANUFACTURER AWARDS

AlumaKor + Central Roofing Company is a Certified Installer and Fabricator for all products.

American Hydrotech + Central Roofing Company is an approved applicator and assembly installer of roofing and waterproofing products.

Carlisle Syntec Systems + Central Roofing Company is an Authorized Applicator in good standing.

CPG PRO, Azek, TimberTech + Central Roofing Company is a member in good standing of the Contractor Program.

Firestone Building Products Company + Central Roofing Company is in good standing and an Approved Applicator of FS Licensed Metal Roof Coating, FS Licensed Garden, FS Licensed Daylighting, FS Licensed Metal Roof Coating, FS Licensed Garden Roof, FS Licensed Daylighting, FS Licensed SkyPavers, FS Licensed Asphalt Roofing, FS Licensed EPDM Roofing and FS Licensed TPO Roofing.

GAF + Central Roofing Company is a MASTER Roofing Contractor for Single Ply, TOPCOAT Restoration, RUBEROID, and GAFGLAS Roofing Systems. Central Roofing Company is eligible to obtain a GAF Diamond Pledge guarantee.

Garland Company + Central Roofing Company is an Approved Contractor.

Industrial Louvers + Central Roofing Company is a certified installer for all products.

John Manville + Central Roofing Company is an Approved Roofing Contractor and authorized with the Johns Manville Peak Advantage Guarantee for JM materials applied to APP, BUR, SBS Asphalt Applied, SBS Heat Welded, SBS Cold Applied, EPDM, PVC, and TPO roofing systems.

PAC-CLAD + Central Roofing Company is an approved installer of standing seam metal roofing systems.

Reynobond | Reynolux + Central Roofing Company is an authorized fabricator and installer of composite material systems and panels.

RMR Rollfab + Central Roofing Company is a certified installer of all products.

Silka Sarnafil + Central Roofing Company is in good standing and is a certified installer of all roofing systems.

Siplast + Central Roofing Company is a Siplast Select Contractor and is authorized to apply guaranteed Siplast roofing systems.

Soprema + Central Roofing Company is an authorized installer of all roofing systems.

Tremco Incorporated + Central Roofing Company is an approved Tremco Applicator in good standing and is authorized to install Tremco-specified roofing systems under the Tremco Roofing Contractor Program and Approved Contractor Agreement.

2024 WORKPLACE AWARDS



2024 COMMUNITY SPONSORSHIPS



We are proud annual supporters of Fraser, Minnesota’s largest provider of services for people with special needs and autism. In 2024, Central sponsored the Fraser Festival and retained Fraser’s permanent Sensory Space location at the Minnesota State Fair. We also contributed to St. Jude’s Research Hospital, Toys for Tots, Hennepin County Medical Center, the University of Minnesota Masonic Hospital, Second Harvest Heartland, Boy Scouts of America, Community Career Partners, and an in-kind project at Springbrook Nature Center in Fridley. In 2025 we are supporting the construction of permanent Sensory Spaces inside Minneapolis-St. Paul International Airport.



It is also our special pleasure to create opportunities for autism awareness and advocacy messages through the creation and partnership in a variety of media projects. We do this in honor of the children and families at Central Roofing Company who are touched by autism with the hope of contributing to a more inclusive world for all.

